

Lincolnshire Coastal Grazing Marshes Project

Roger Wardle



Lincolnshire
COASTAL GRAZING
MARSHES PROJECT

01790 752366

rw.consultancy@btinternet.com



Peak Winter Bird Count-7600

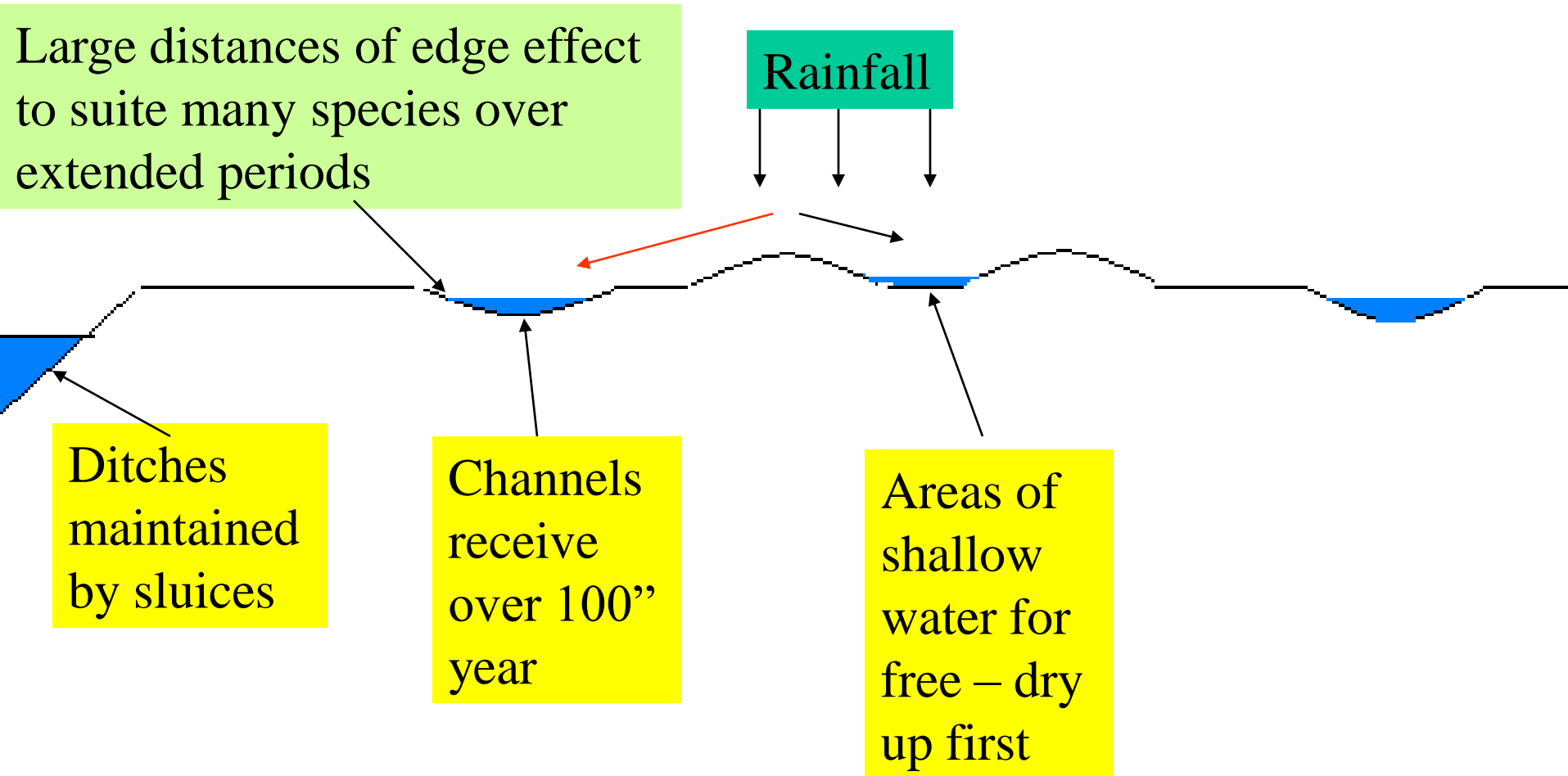
Lapwings - 4800

115 Acres



Restored from arable

Variable, self maintaining water levels – sites where there is only rainfall to create wet habitat.

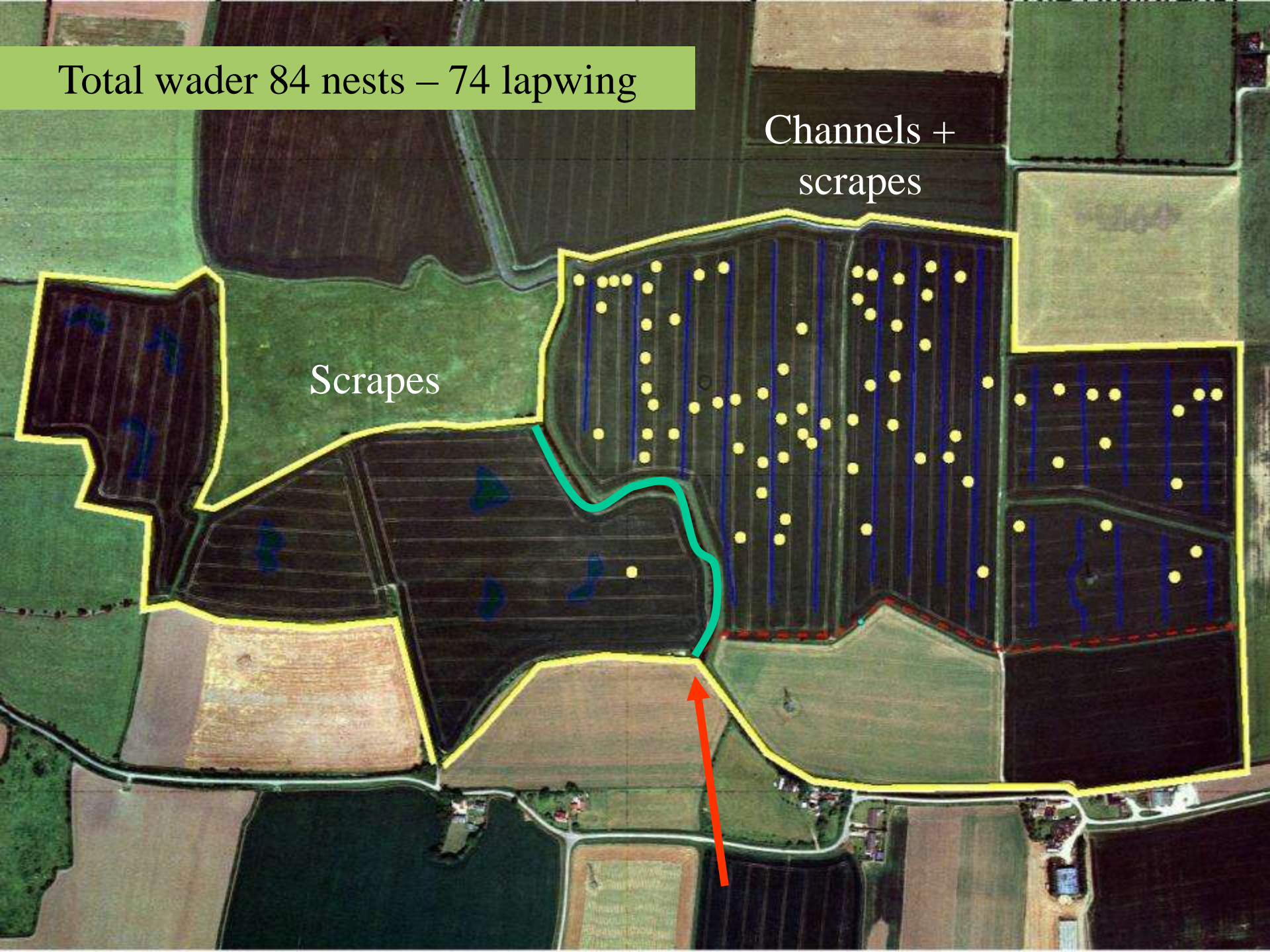


‘Dew Pond Principle’ developed by Roger Wardle

Total wader 84 nests – 74 lapwing

Channels +
scrapes

Scrapes







Lincolnshire

COASTAL GRAZING
MARSHES PROJECT



- Area 42 boundary
- Adjacent Area
- A Road
- B Road
- Railway and Station
- County boundary
- Unitary Authority boundary

200-400'
0-200'
height above sea-level in feet

0 10km

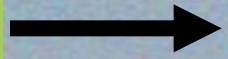


Partners

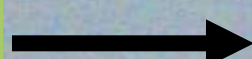


Restoration Principles :

•Identify



•Protect



•Manage



•Extend/Buffer



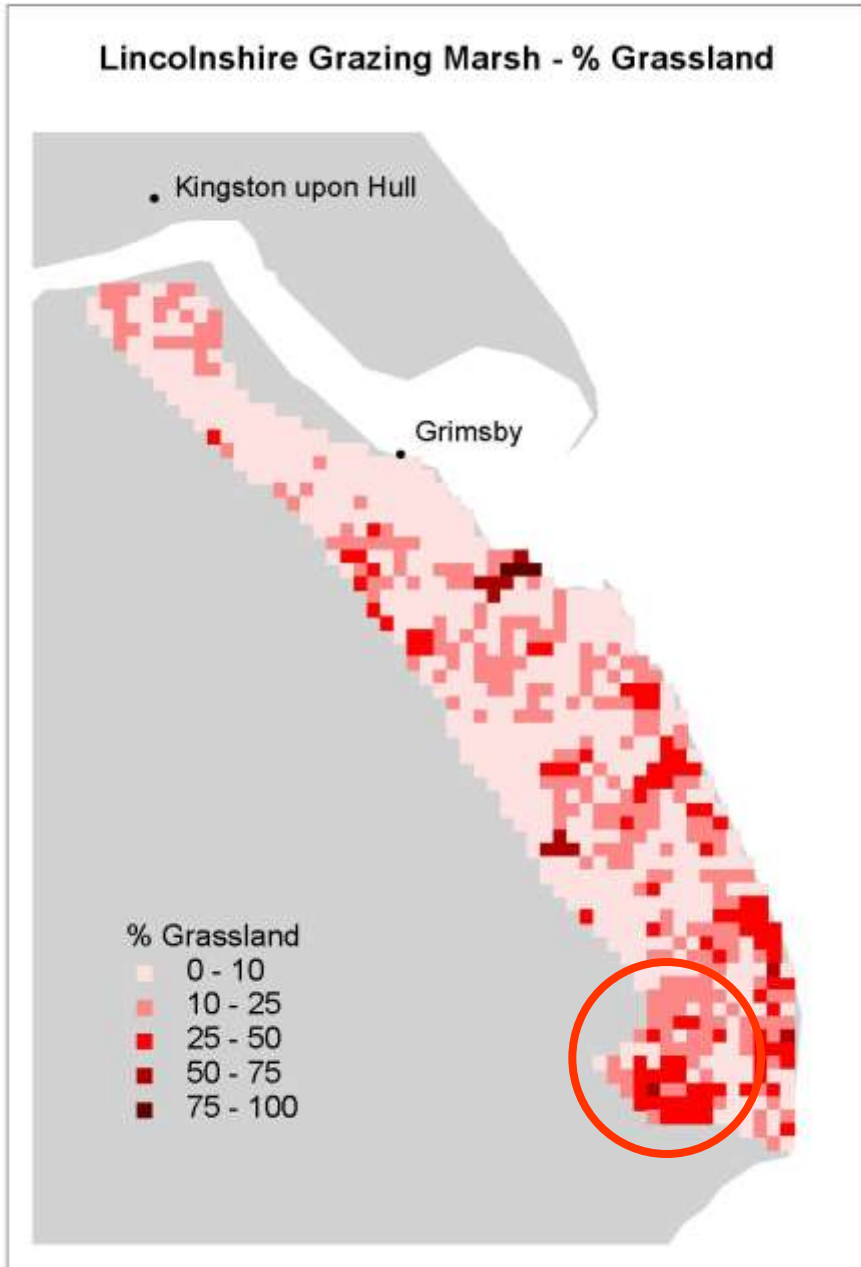
•Link



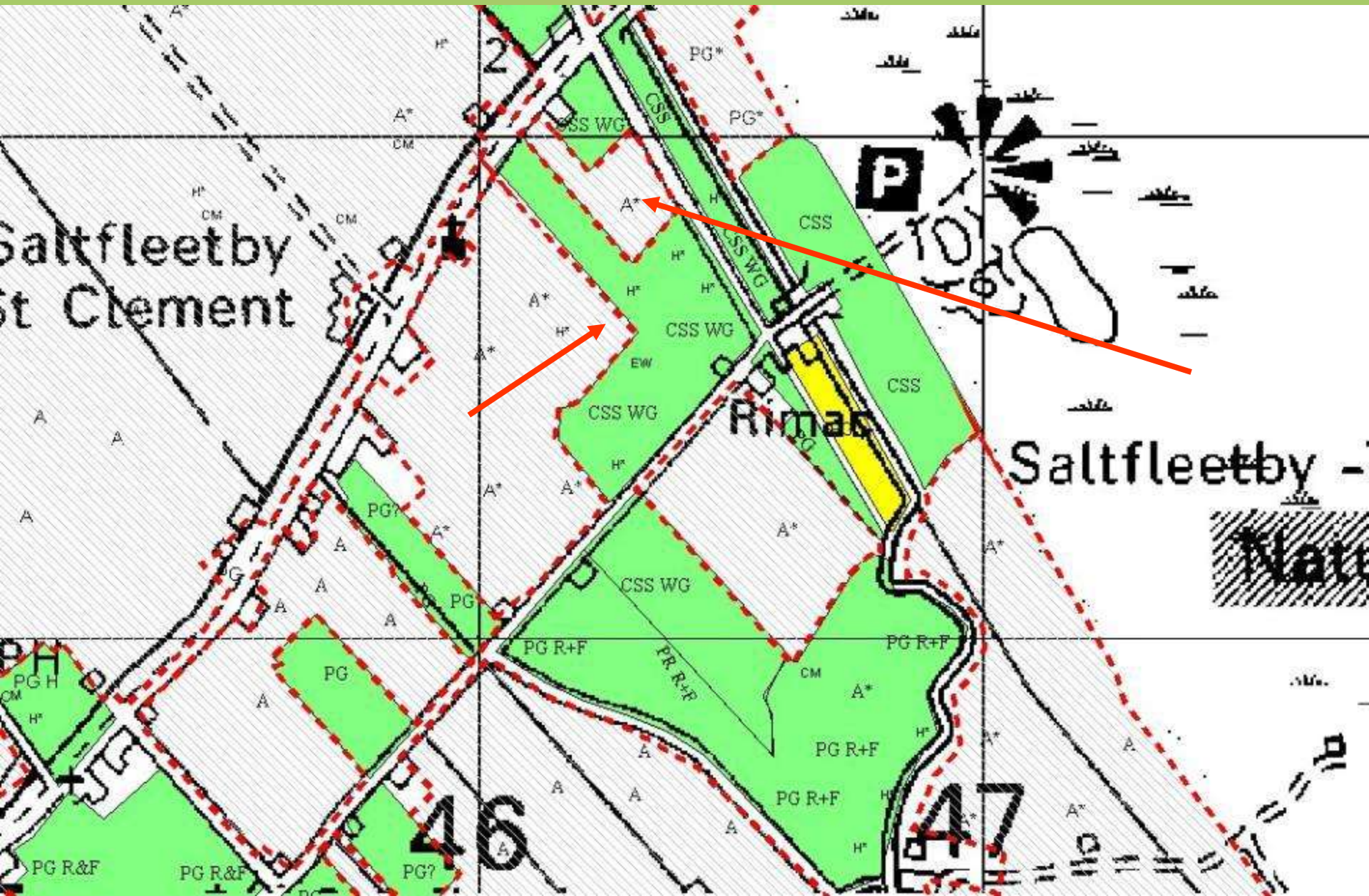
•Recreate



DEFRA data
showing
percentage
grassland at 1 km
square resolution
Darkest = Most



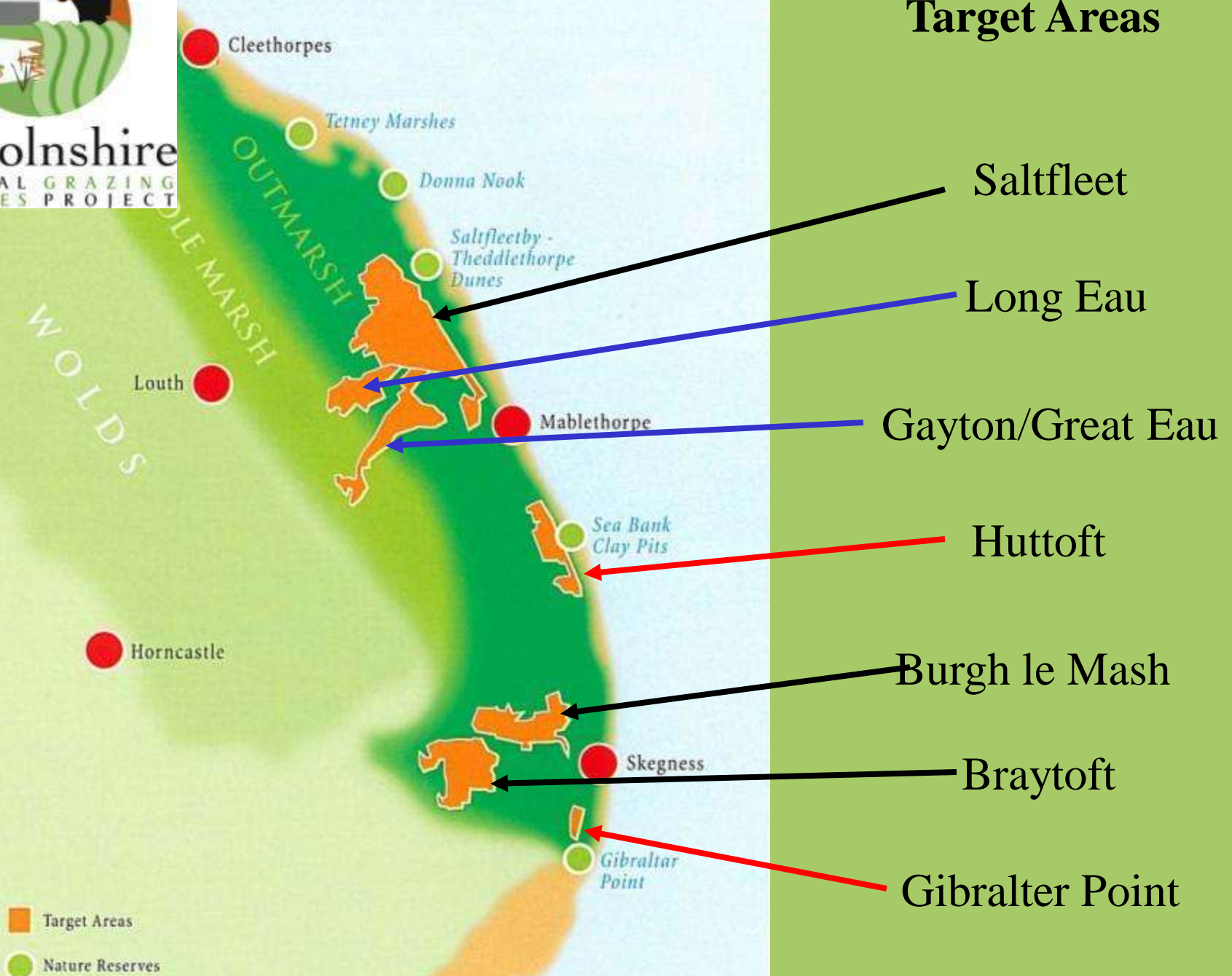
Saltfleet Target Area – 1:10,000





Lincolnshire
COASTAL GRAZING
MARSHES PROJECT

Target Areas



Target Areas
Nature Reserves

- Saltfleet
- Long Eau
- Gayton/Great Eau
- Huttoft
- Burgh le Mash
- Braytoft
- Gibraltar Point

LINCOLNSHIRE'S COASTAL GRAZING MARSH

A VISION FOR THE FUTURE

OPPORTUNITIES FOR PEOPLE AND
WILDLIFE THROUGH PROTECTING
AND RESTORING GRAZING LAND



The Lincolnshire Coastal Grazing Marsh will once again have extensive grassland landscapes rich in wildlife, intersected by a distinctive pattern of water courses. Within this landscape, pastoral farming thrives and local communities have a high quality of life. The area is attractive to local people and visitors, with year-round opportunities to experience the natural and historic environment through improved access, helping to develop and sustain a vibrant rural economy.



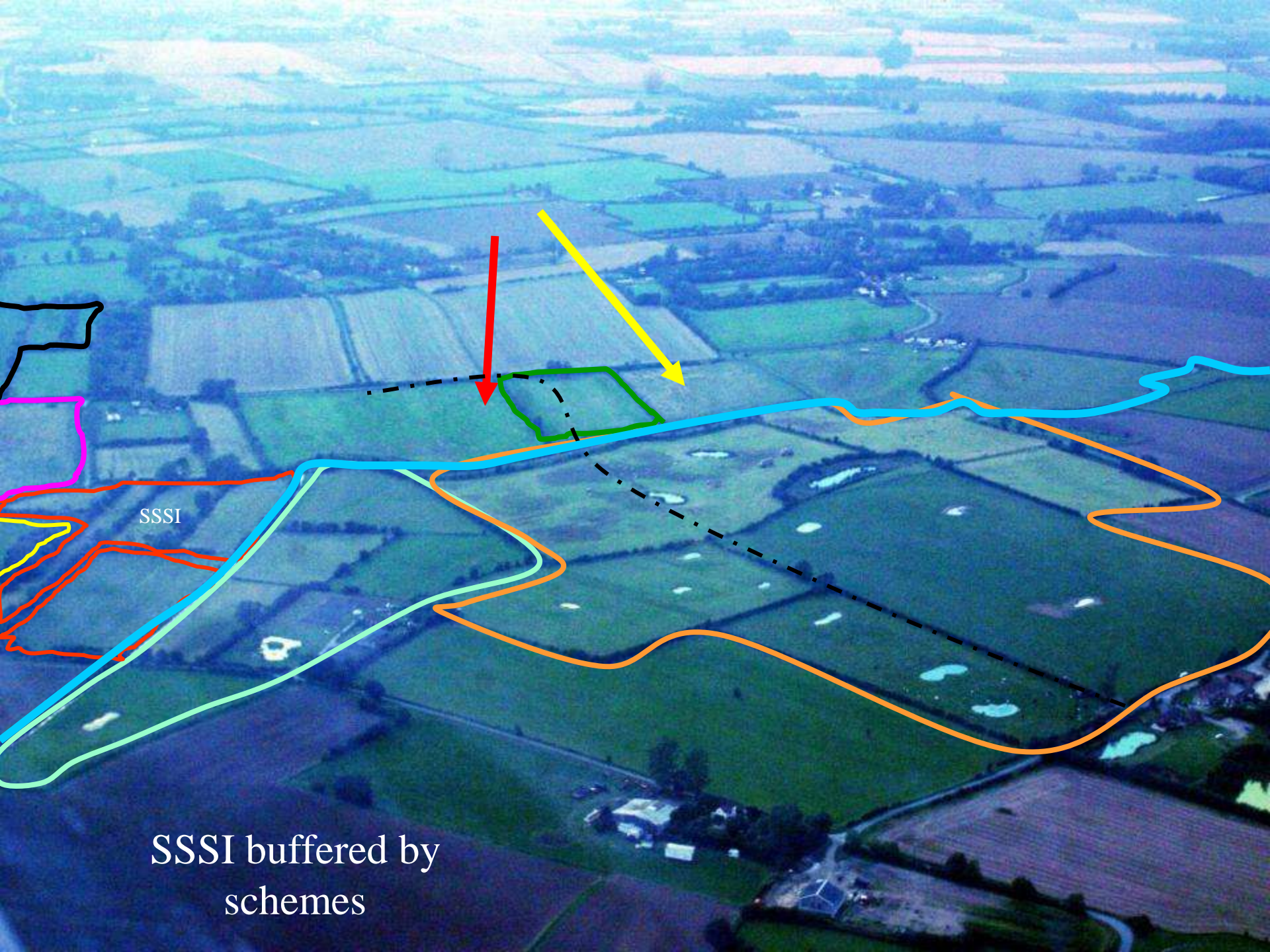
Aims

- To encourage retention and re-establishment of viable pastoral farms;
- To enhance access and recreation opportunities for visitors and local communities;
- To stimulate local economic activity through the marketing of locally produced high quality products and services.



- Environmental Land Management Project Officer
- Provide a trusted contact for farmers and landowners
- Very important to be able to talk farm management and economics





SSSI

SSSI buffered by
schemes

Discovered & Protected



Before



After



Recreation 200 acres + 3.4km access +
flood protection & waders







Historical preservation

Multi benefit objectives





Landscape Scale Habitat Mosaic Essential

BUT

Involve Everyone Especially the Public & Farmers