

Working Wetlands

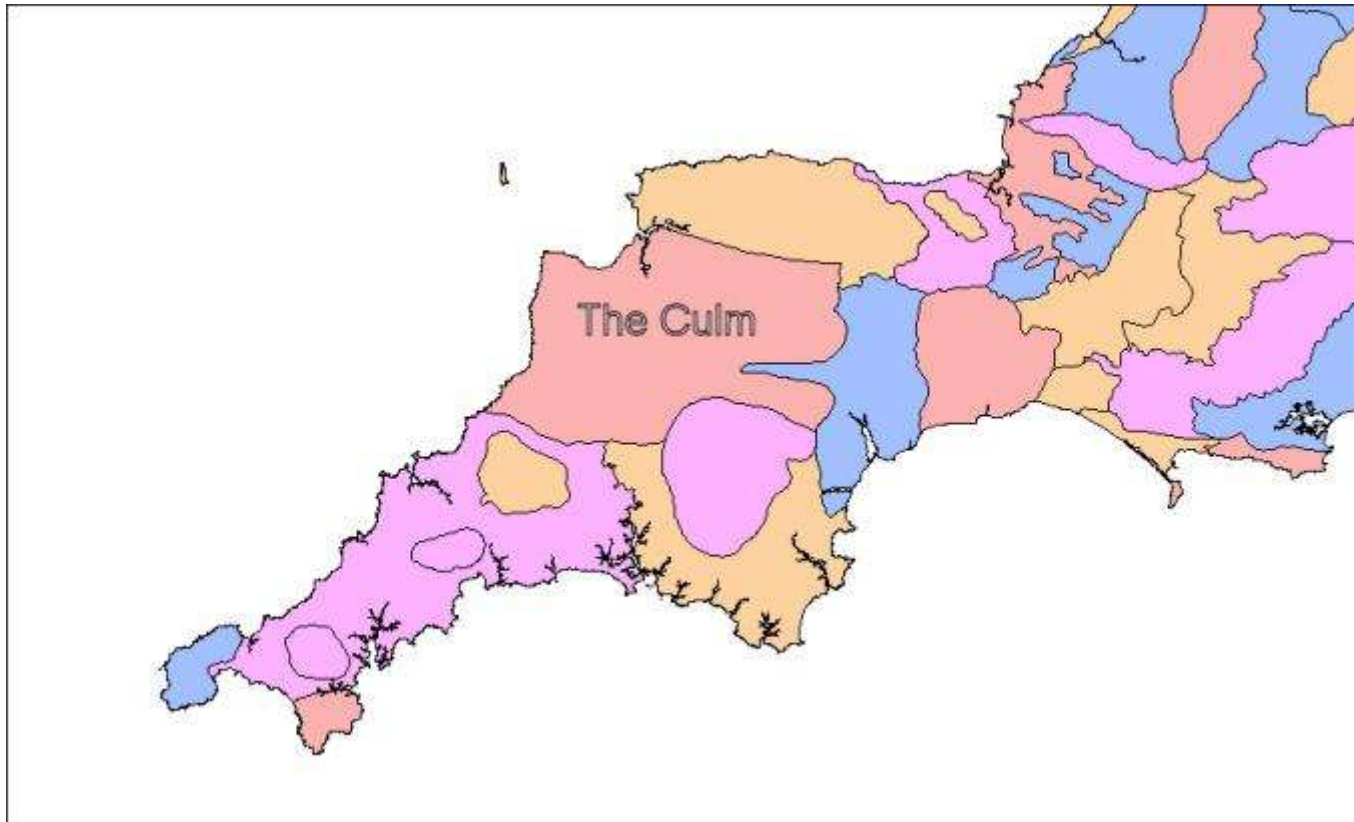
Peter Burgess

Working Wetlands Project Manager



Working Wetlands.....

5 year Living Landscape project working in the Culm Natural Area of Devon.



Working Wetlands

Aiming to secure the future of.....



Working Wetlands

Aiming to secure the future of.....



Working Wetlands

Aiming to secure
the future of.....



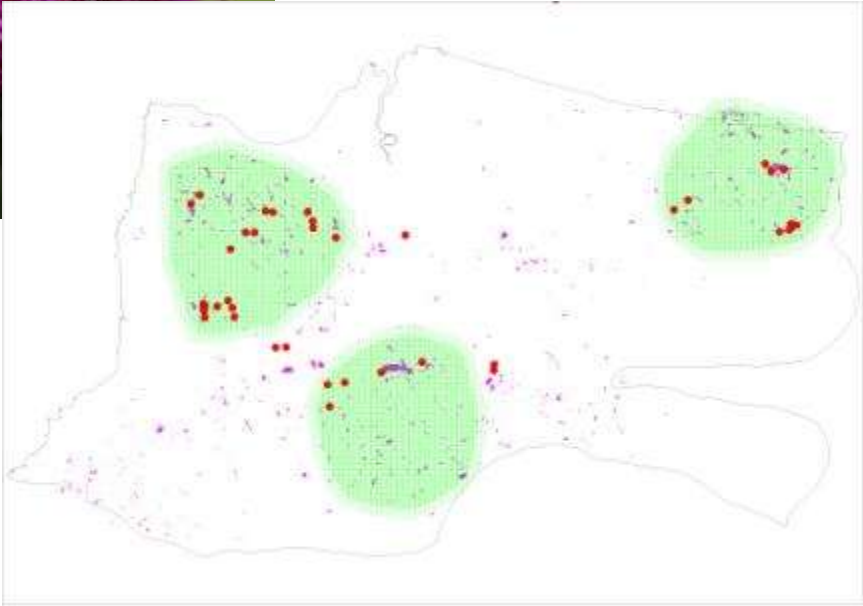
Working Wetlands

Aiming to secure the future of.....



Working Wetlands

Aiming to secure the future of.....



Working Wetlands

Aiming to secure the future of.....



Project Objective

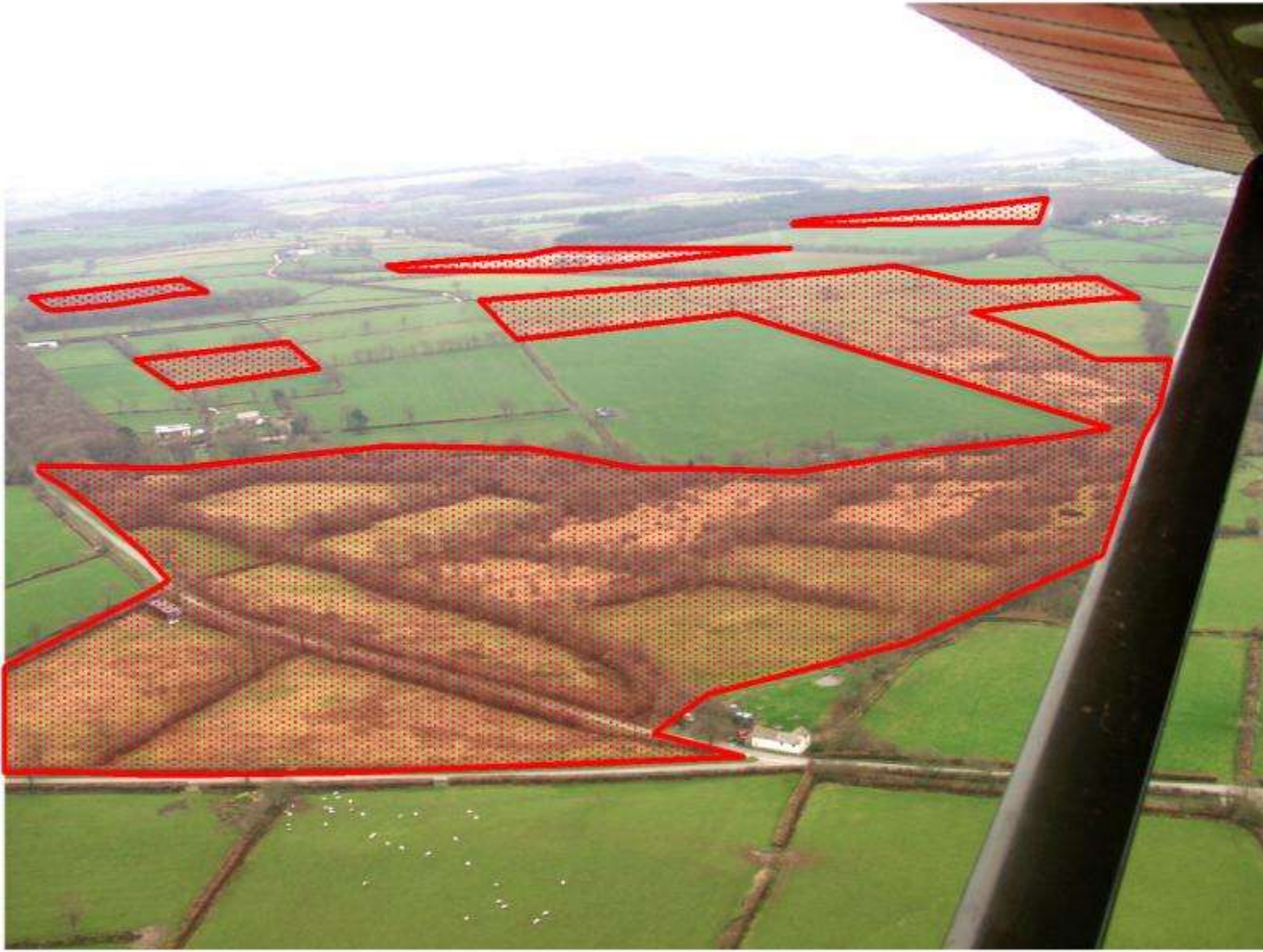
'To create a Living Landscape in the Culm'





Devon









Devon





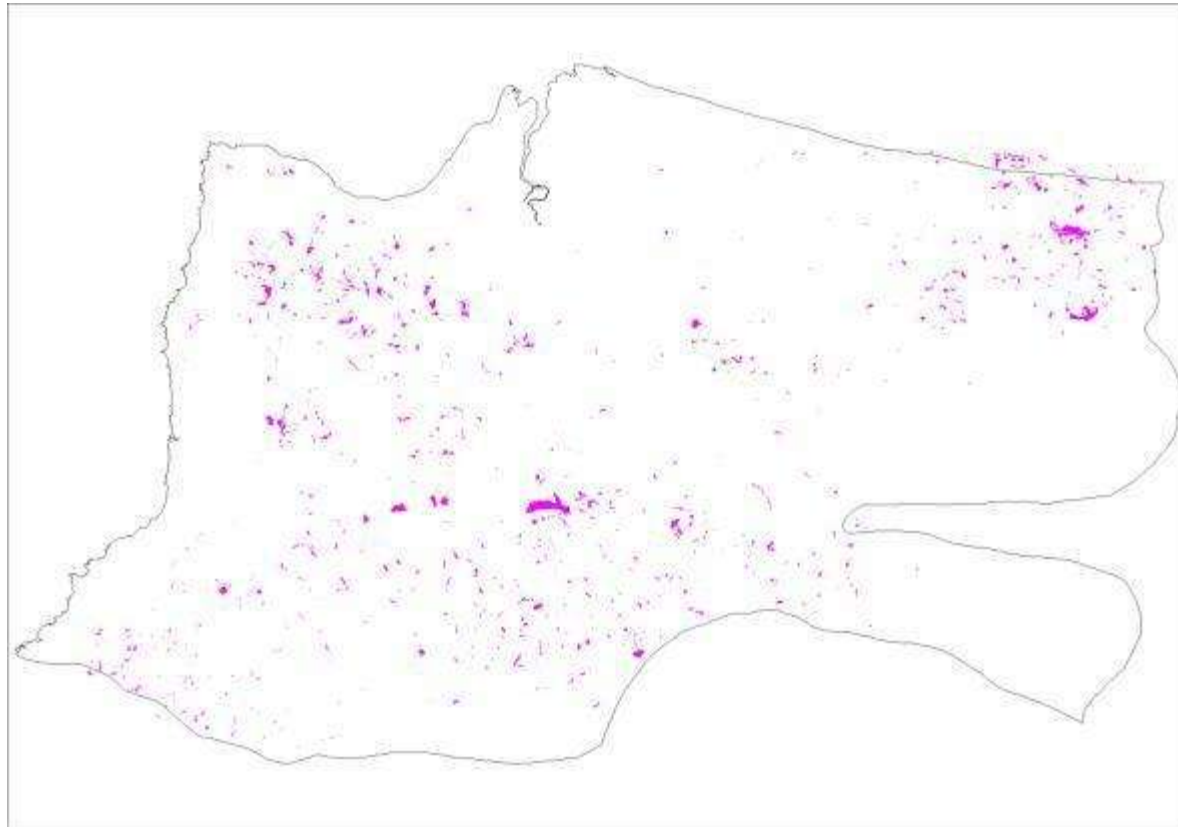


The landscape needs to be put to work for us.....



Conservation need

- Only 4047 hectares of Culm Grassland Remain
Or 1.4 % of land area



Conservation need

Resource characteristics

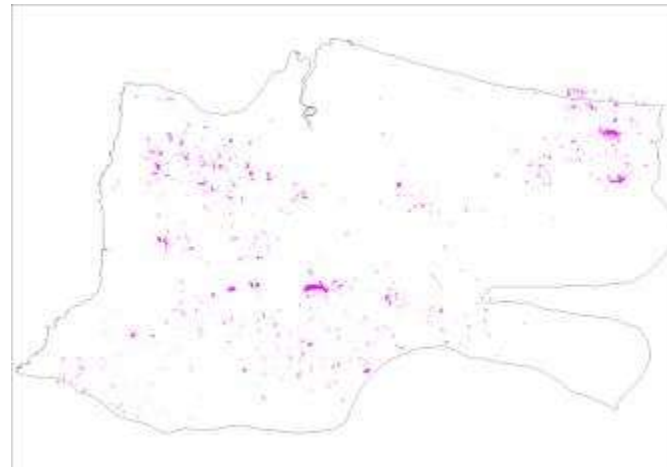
575 recorded sites

4047 hectares

1.4% land area

**360 sites (63%) under
5 hectares**

Largest site 218 hectares



Conservation need

State of the resource 2006 - 2008

Culm Grasslands

238 sites surveyed

98 favourable

26 total loss

114 partial loss

Agricultural improvement 20%

Scrub 53%

Ponds / wetlands 6%

Tree planting 4%



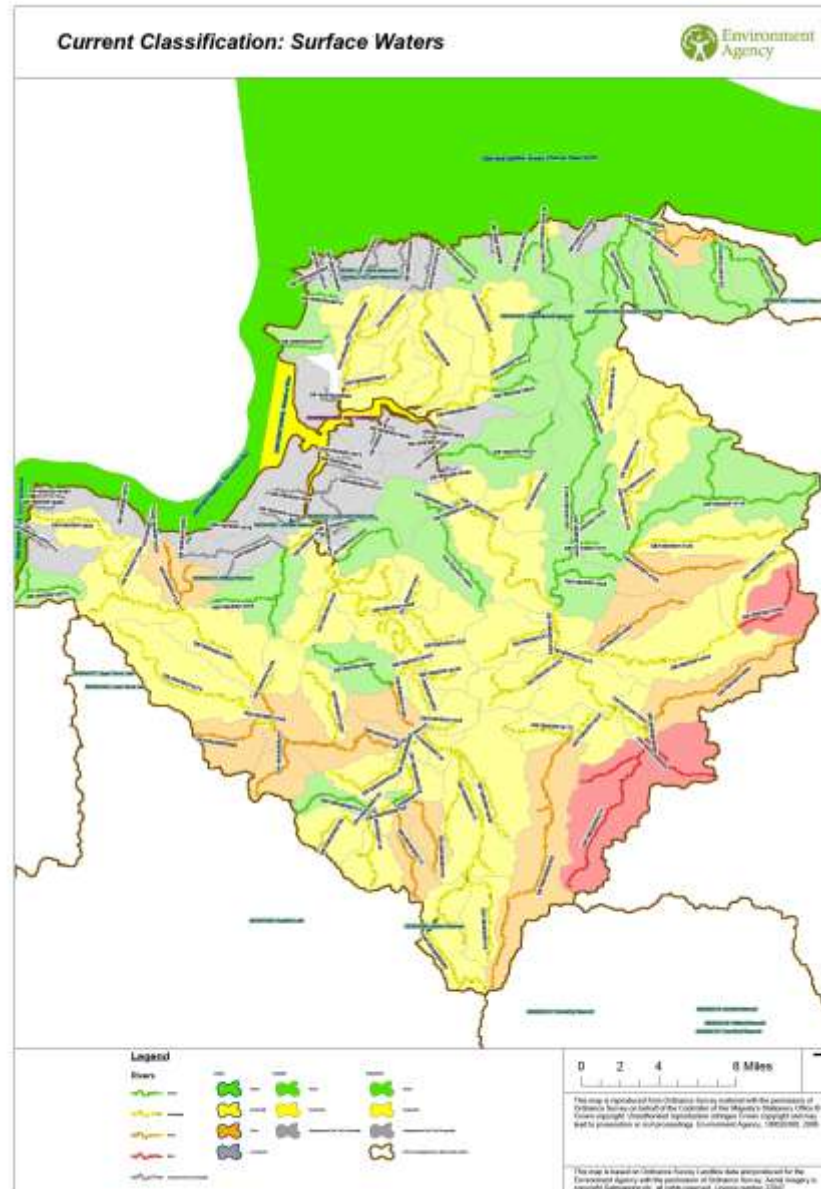
Conservation need

Water quality

Water Framework
Directive
Draft River Basin
Management Plan

North Devon Catchment

“26% of waters currently
meet good ecological
status”



Conservation need

Climate change

- Habitats and species under a greater level of stress
- Traditional management of sites constrained – leading to inappropriate management
- Increased disease risk and associated costs – eg. Bluetongue
- External economic pressures changed



Farming economy

Mixed farming sector in Devon is in a precarious position

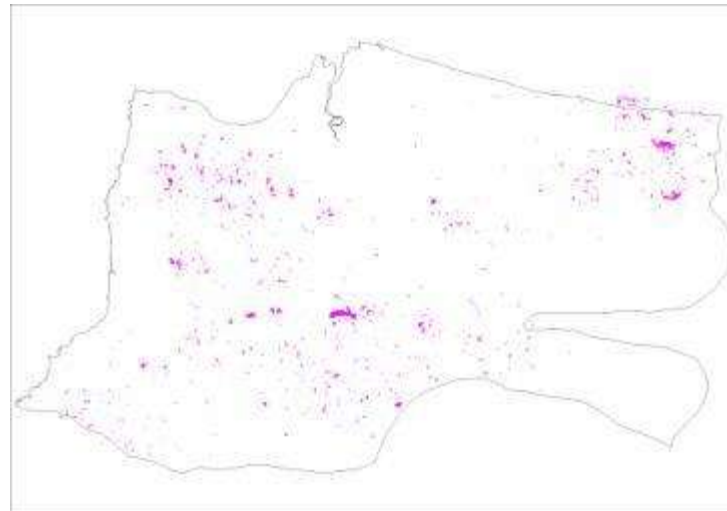


	Income Source				
	Agriculture	Agri-environment	Diversification	Single Payment	FBI
Cattle and sheep - lowland	-£8973	£3696	£4870	£15,087	£14,680
Cattle and sheep - LFA	-£12,679	£9592	£1261	£16,672	£14,846

Source: Farm Business Survey 2008

Perennial problems of managing small sites in a fragmented landscape

- Prohibitive level of capital investment required
- Difficulty in accessing agri-environment support
- Appropriate grazing livestock unavailable
- Inappropriate machinery
- Knowledge and skills
- Insufficient habitat data
- Socio-economic environment



How will our aims be achieved?

- 5 year project
- 3 Working Wetlands Advisors
- 1 Grazing Links Officer
- 1 Project manager

- Conservation officer: planning policy



How will our aims be achieved?

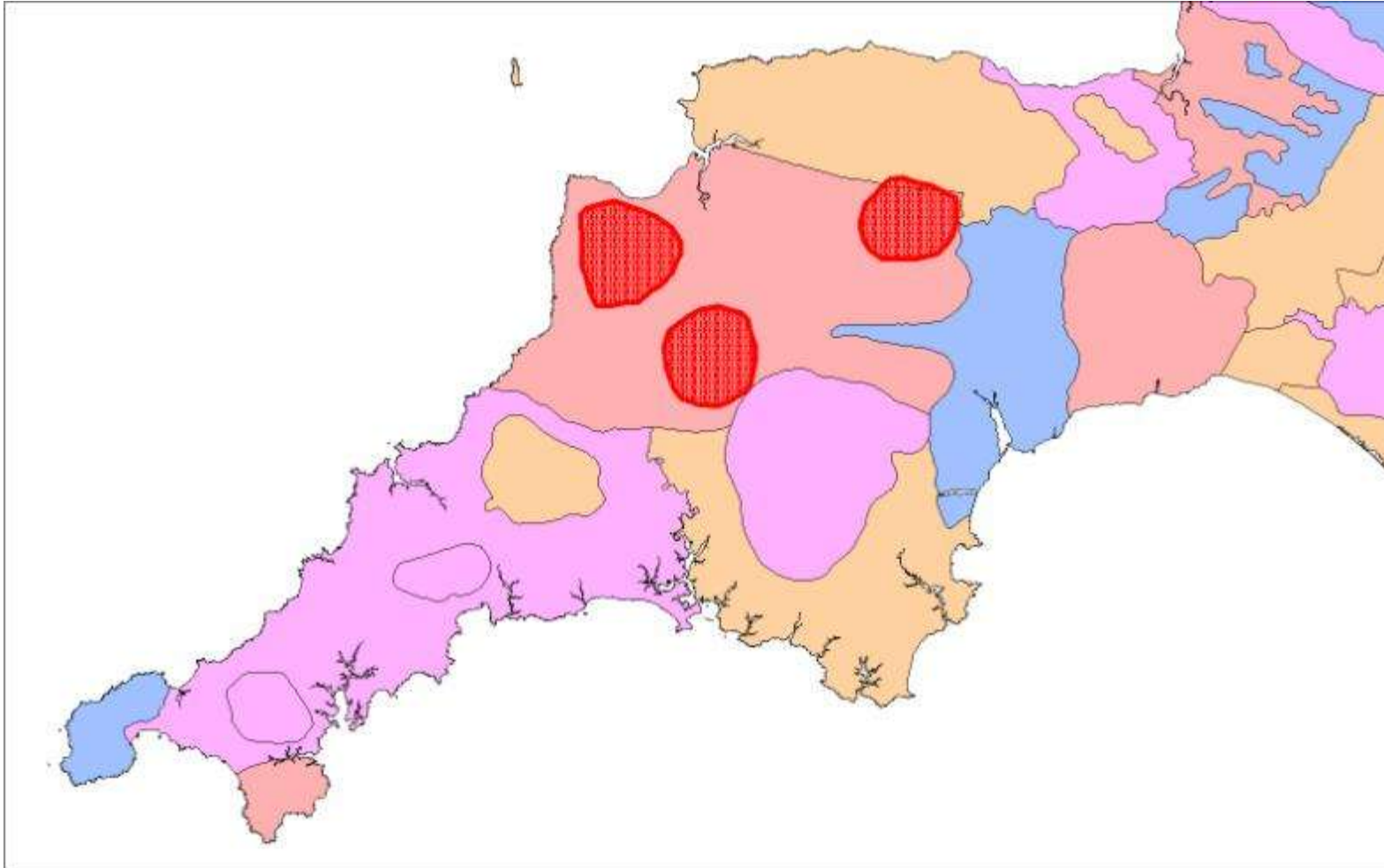
- 5 year project
- 3 Working Wetlands Advisors
- 1 Grazing Links Officer
- 1 Project manager
- Conservation officer: planning policy

How is it different?



It is big!

65,000 hectares are targeted

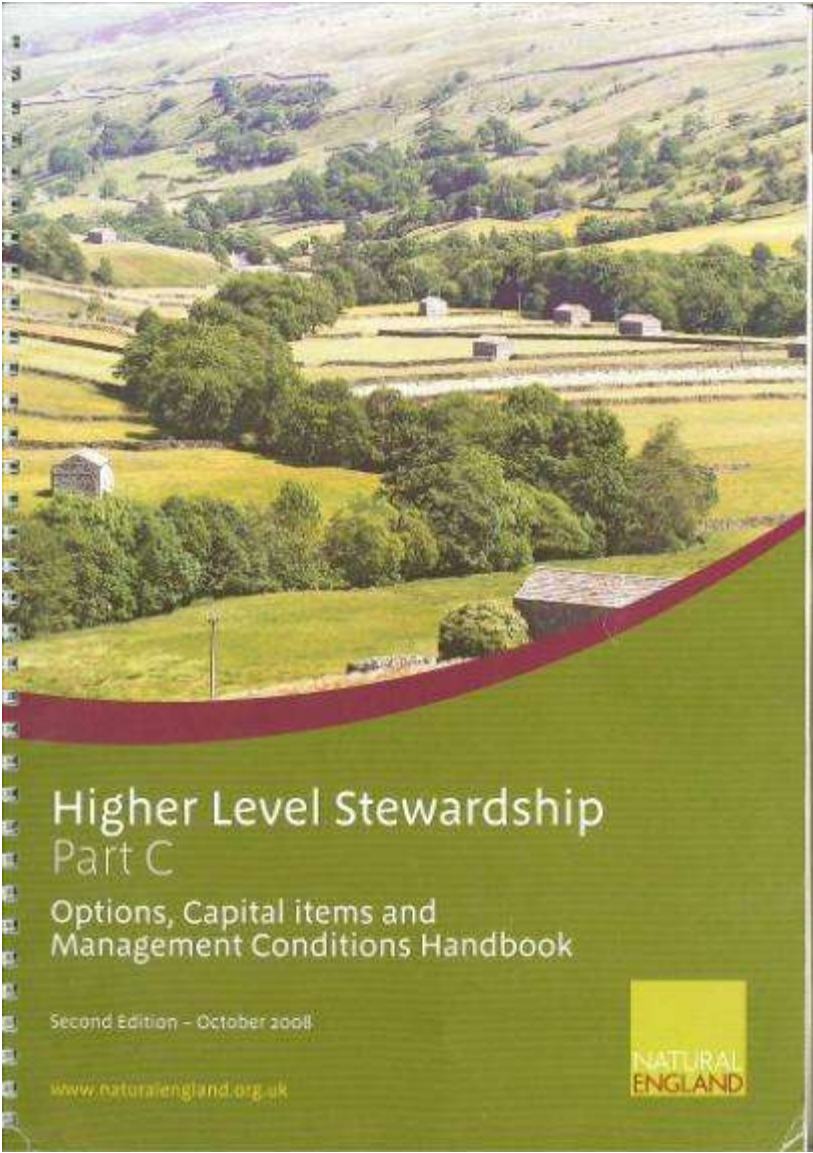


Whole holding advisory service in priority areas

Over 750 landowners will be targeted



Environmental Stewardship advice



Small grant award administered



Working Wetlands herd



Machinery ring

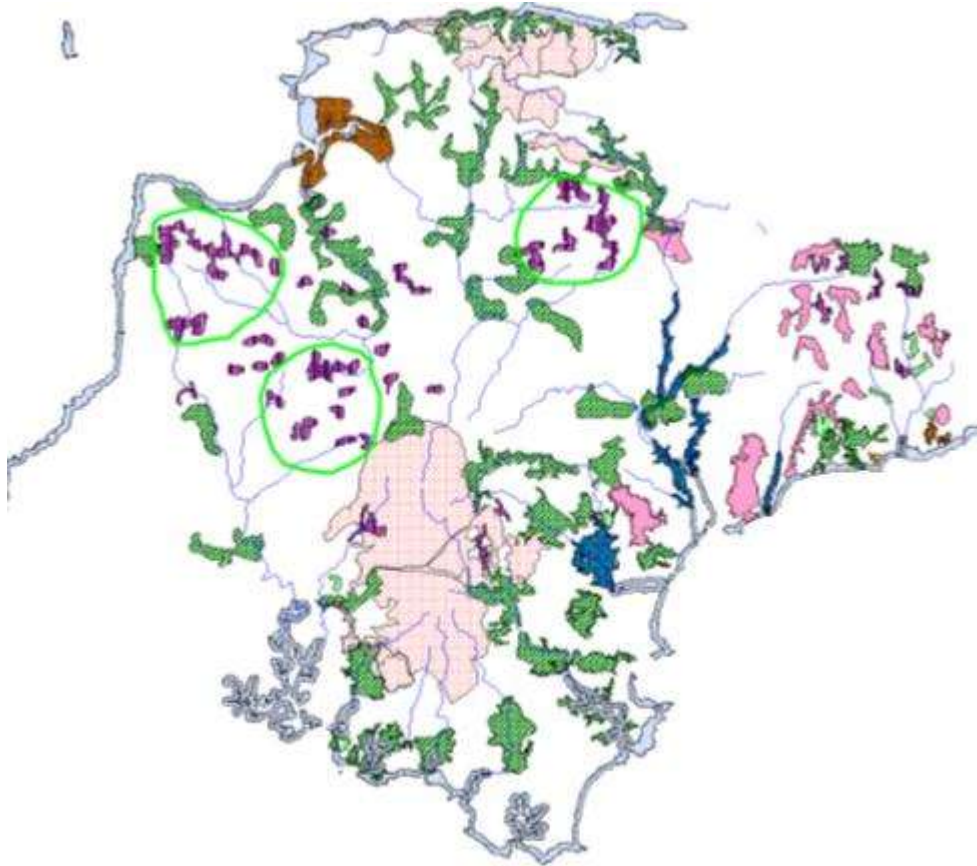


Training events organised – demonstration sites provided

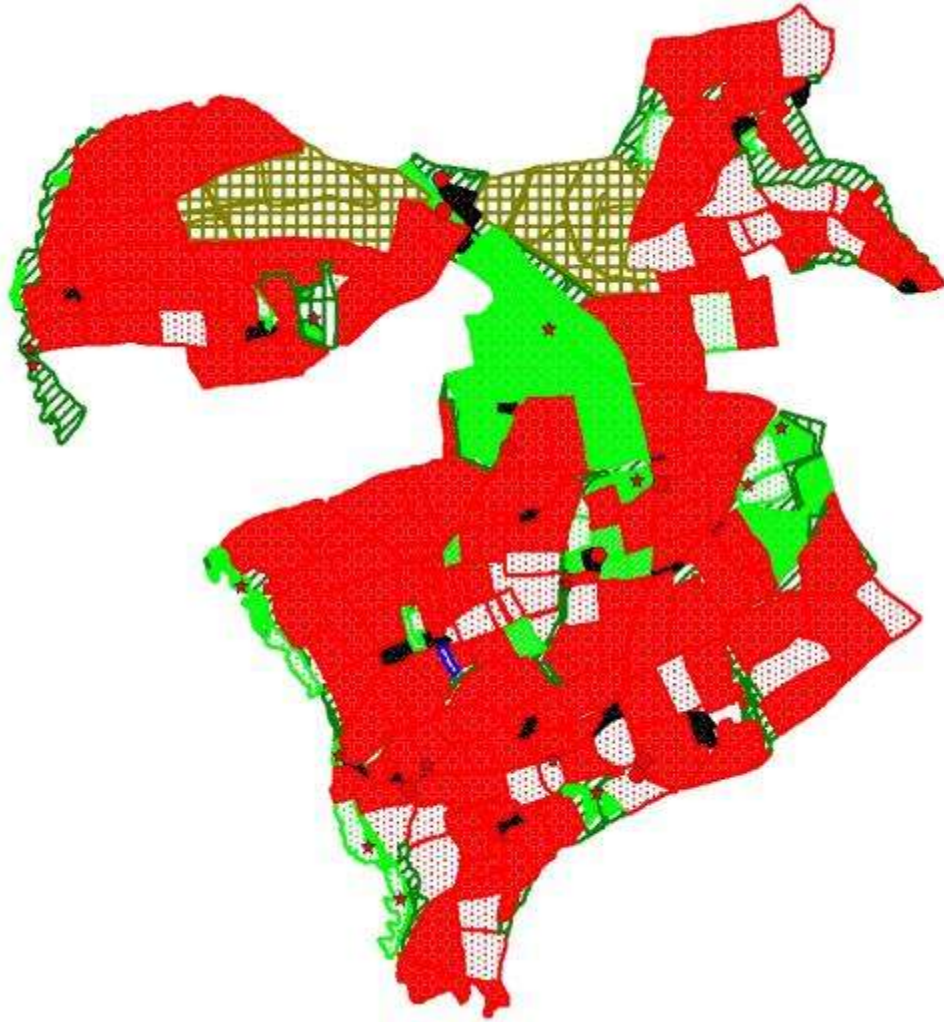


Strategic targeting of a landscape

- South West Nature Map



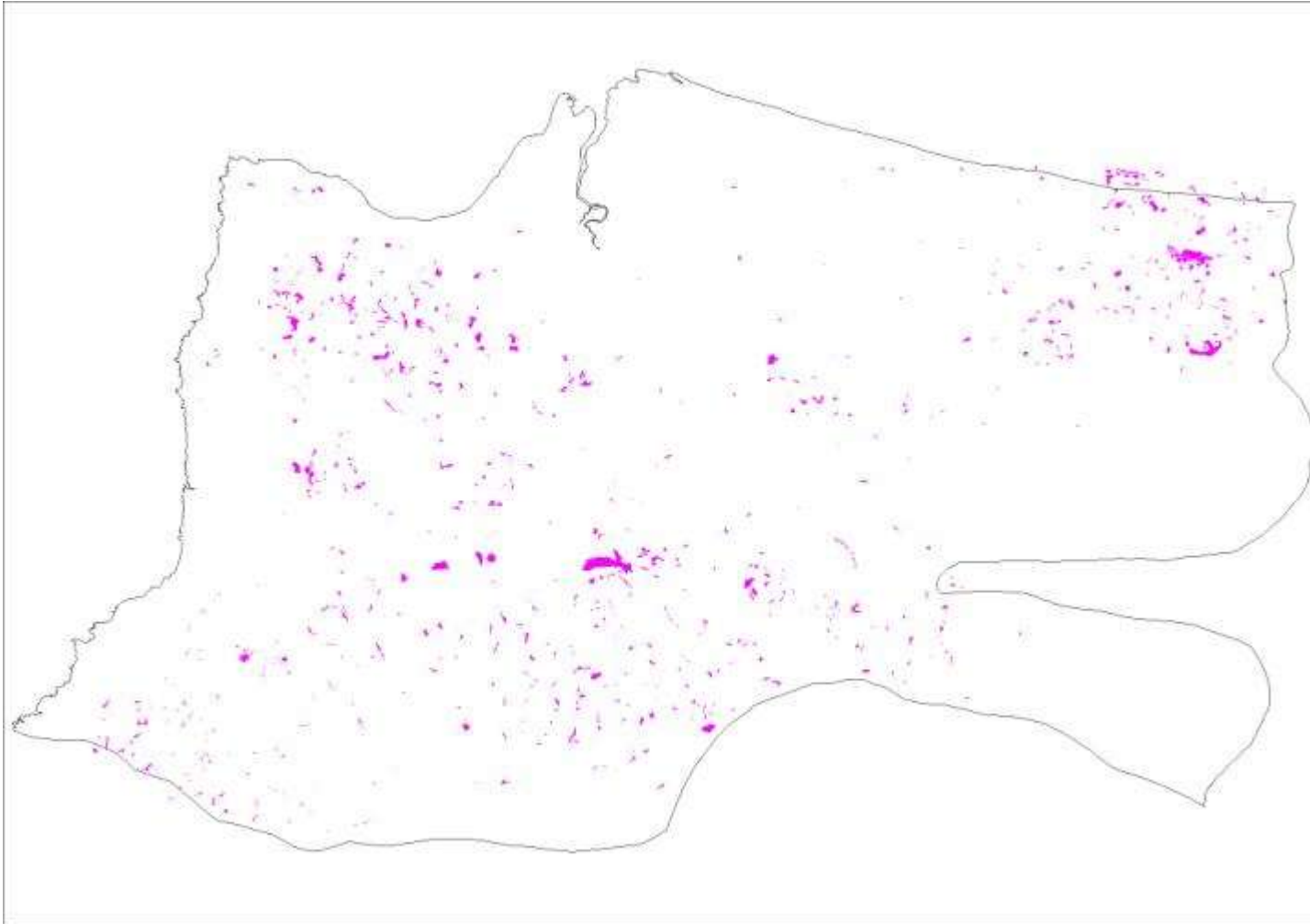
Parish biodiversity audits



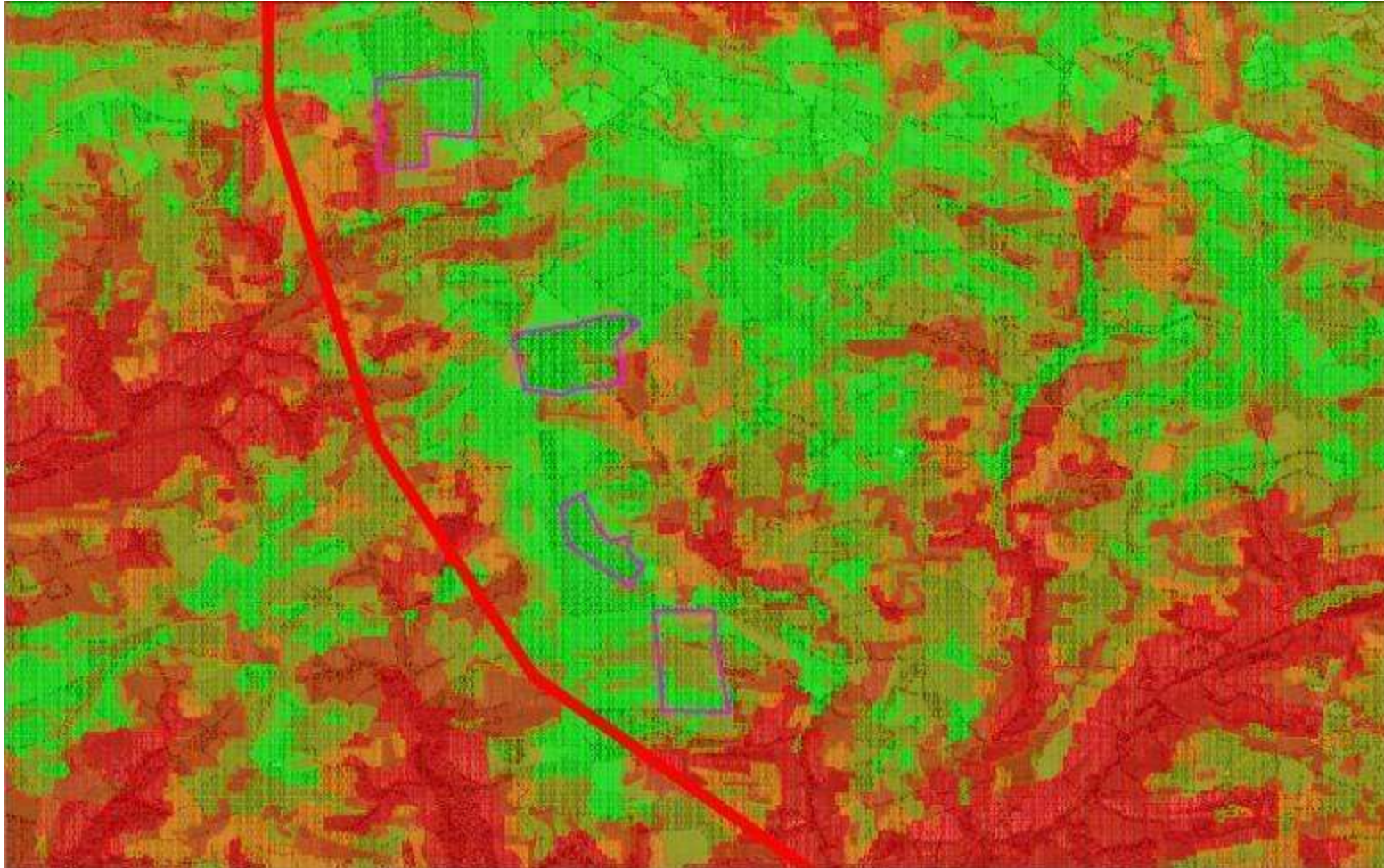
East Putford
Parish



Priority habitat and species datasets



Culm restoration suitability map



Source: Natural England / Devon Wildlife Trust

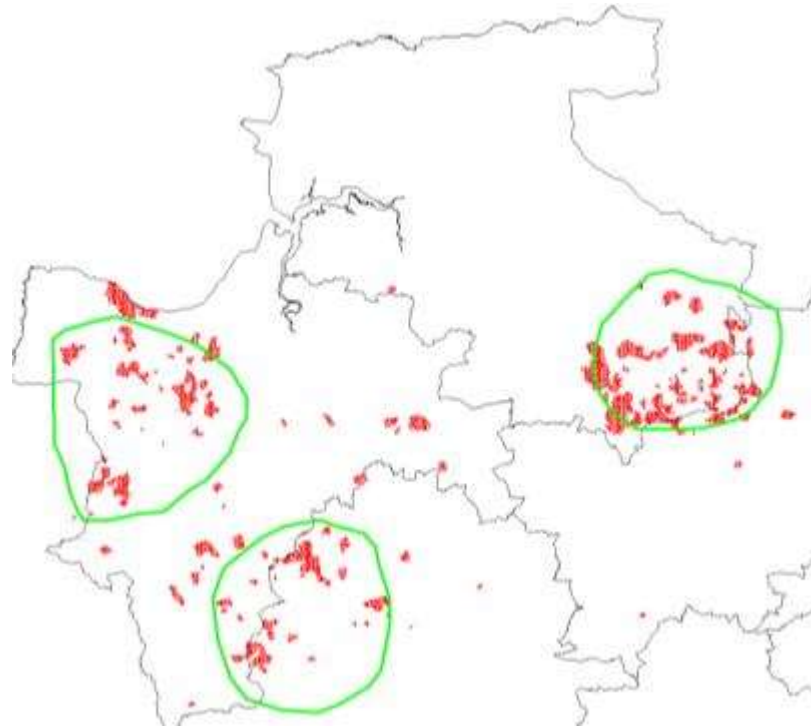


Achievements

7730 hectares land visited

507 advisory visits

Over 30 grazing agreements brokered each year = 150
hectares of semi-natural habitat



Achievements

Collaborative working



Wet grassland restoration demonstration farm

Aerial of Dunsdon Farm HLS Project



Soil stripping



Deep ploughing



Knowstone and Witheridge priority area Affeton Moor



*Culm Creation From
Sitka Spruce*

Odam Moor –
23 hectares

Lutworthy Moor –
20 hectares

Cuddenhay Moor –
10 hectares





Knowstone and Witheridge priority area Affeton Moor



*Culm Restoration from
Semi-improved
grassland*

Affeton Moor

23 Hectares of green
hay sowing





To conclude:

Working Wetlands is helping to deliver a Living Landscape by:

- Working at the catchment / ecosystem scale;
- Working strategically with accurate data;
- Collaborative / partnership approach with farmers and conservation land management organisations;
- Identifying and addressing the problems that semi-natural habitats face in a fragmented landscape;
- The socio-economic environment needs restoration.

